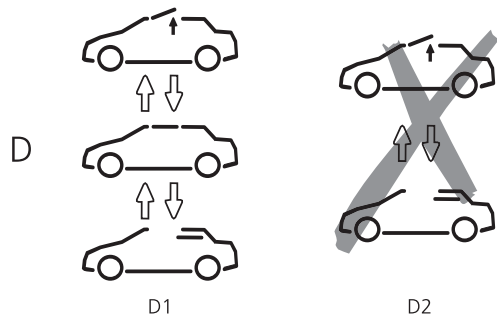
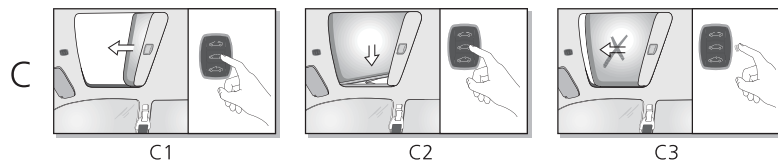
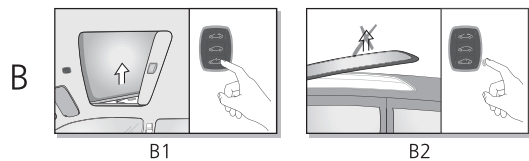
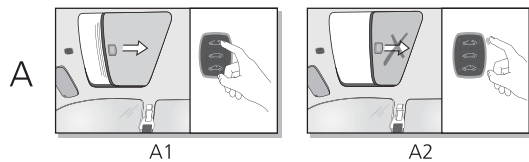




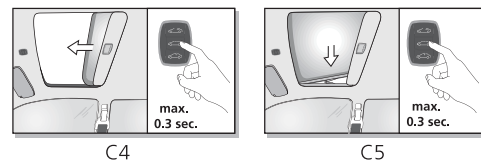
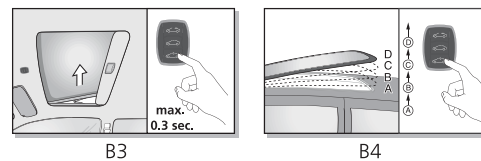
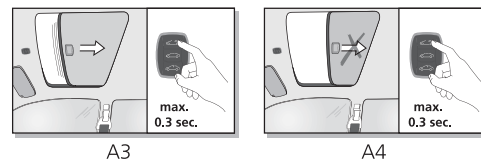
Hollandia 700-II Comfort & Entry Series

Operating Instructions

ENTRY & COMFORT



COMFORT



Dear Customer,

Webasto Product North America, Inc. would like to thank you for purchasing a Hollandia 700 Series sunroof. This new generation sunroof is available in 2 grades, ENTRY and COMFORT.

Below you will find everything you need to know about this Hollandia 700 Series tilting and sliding sunroof. In order to achieve maximum sunroof functionality, please read through these instructions carefully. Happy motoring!

SWITCH

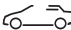
The sunroof can be operated by a 3 button switch with self explanatory symbols. You can either tilt, slide or close the glass panel.

The switch for an ENTRY sunroof is solid black. The COMFORT switch is available in 3 colors (black, beige and gray), has LED illumination and a metal colored edge.

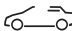
OPERATION

Ensure that your vehicle ignition is switched ON.


SLIDE OPEN (Entry version and Comfort version)

By continuously pressing the button  the glass panel will move in the OPEN direction (fig. A1). The movement of the panel continues as long as the button is pressed. The panel stops when the button is released (fig. A2) or the FULL SLIDE OPEN position is reached.


ONE TOUCH SLIDE OPEN (Comfort version only)

By pressing the button  briefly (max. 0.3 seconds) the glass panel will move automatically towards the FULL SLIDE OPEN position (fig. A3). The panel stops when any of the buttons are pressed (fig. A4) or when the FULL SLIDE OPEN position is reached.


TILT (Entry version only)

By continuously pressing the button  the glass panel will move in the TILT direction (fig. B1). The movement of the panel continues as long as the button is pressed. The panel stops when the button is released (fig. B2) or the FULL TILT position is reached.


ONE TOUCH TILT (Comfort version only)

By pressing the button  briefly (max. 0.3 seconds) the glass panel will move automatically towards FULL TILT position (fig. B3). The panel stops when any of the buttons are pressed or when the FULL TILT position is reached.

4 STEPS TILT (Comfort version only)

By continuously pressing the button  the glass panel will move in the TILT direction in 4 steps (fig. B4). The 4 step function allows the user to find the most comfortable tilt position easily. The movement of the panel continues as long as the button is pressed. The panel stops when the button is released or the FULL TILT position is reached.


CLOSE (Entry and Comfort version)

By continuously pressing the button  the glass panel will move towards CLOSE position (fig. C1 and C2). The movement of the panel continues as long as the button is pressed. The panel stops when the button is released (fig. C3) or the FULL CLOSE position is reached.

NOTE

The speed of the glass panel is reduced approximately 5.5" (140mm) before complete close. This is a feature of Anti-Pinch Protection (page 3) ensuring the safety of an obstacle that the glass panel may encounter.

ONE TOUCH CLOSE (Comfort version only)

By pressing the button  briefly (max. 0.3 seconds) the glass panel will move automatically towards the FULL CLOSE position (fig. C4 and C5).

The panel stops when any of the buttons are pressed or when the FULL CLOSE position is reached.

NOTE

It is NOT possible to select TILT from SLIDE position directly and vice versa (fig. D2). In that case the glass panel will not move.

You should always press the button  (CLOSE) first (fig. D1).

ADDITIONAL FEATURES**ANTI-PINCH PROTECTION (Safety Feature)**Entry version:

Should the glass panel encounter an obstacle while closing from SLIDE position, it automatically stops.

Comfort version:

The anti-pinch protection becomes active when the sunroof is closed either by CLOSE, ONE TOUCH CLOSE or AUTO-CLOSE.

Should the glass panel encounter an obstacle while closing, it automatically opens again.

AUTO-CLOSE (Comfort version only)

When turning off your vehicles ignition, the AUTO-CLOSE will be activated. After three seconds the sunroof will close automatically. This counts only when the glass panel is in SLIDE position. In case the panel is in TILT position, it will remain open to keep the ventilation function.

Should you require the sunroof to stop, while closing, press any of the buttons briefly. You can also prevent the panel from closing by pressing any of the buttons within the three second interval.

When you switch the ignition on, the sunroof can be operated in the normal manner.

ILLUMINATION (Comfort version only)

The switch is equipped with 4 color LEDs (white, green, blue and red) to allow for the best match with the factory set instrumentation coloring. The default color setting is white. If not already done you can ask your installer to change the color.

WIND DEFLECTOR (Comfort version only)

In order to reduce wind noise and buffeting the sunroof is equipped with a wind deflector. The wind deflector will automatically pop up in SLIDE position.

SUNSHADE

Sunshade operation depends on glass panel movement. By moving the panel to TILT position, the sunshade automatically opens slightly to allow for some airflow. If desired it can be opened further manually. By moving the panel to SLIDE position, the sunshade will move simultaneously, but can also be opened further manually. Closing the sunshade always has to be done manually. The sunshade can only be closed completely when the panel is in FULL CLOSE position.

MAINTENANCE

Generally, no maintenance is required.

GLASS PANEL

To clean the glass panel use only a mild, non-scratching detergent and a brush or sponge. When starting your journey you are advised not to open the sunroof during the first few minutes if there is moisture on the panel. Webasto recommends first driving with the sunroof closed until all moisture has evaporated.

WARRANTY

Webasto Product North America Inc. warrants the Webasto Hollandia 700 Series sunroof to be free from defects and with good workmanship for their normal use.

The Hollandia 700 Series comes with a lifetime parts warranty when installed and serviced by a Webasto Authorized Installer.

The warranty applies only when the sunroof has been installed by a Webasto Authorized Installer and in accordance with Webasto installation instructions. Defects caused by rough handling, incorrect use, accident and broken glass are not covered by this warranty. Transportation costs are at the responsibility of the owner.

Proof of original purchase with date of installation is required to receive warranty service.

Labor costs for installation or service are not covered under this warranty and should not be assumed unless the installer provides a separate written warranty.

All obligations of Webasto Product North America Inc. under this warranty shall be terminated if:

- Service is performed by someone other than a Webasto Authorized Installer.
- The product is modified or altered in a way not approved by Webasto Product North America Inc.
- The owner cannot produce evidence of original purchase and installation date.

WEBASTO PRODUCT NORTH AMERICA INC MAKES NO OTHER WARRANTY OF ANY KIND WHATEVER, EXPRESS OR IMPLIED; AND ALL IMPLIED WARRANTIES OF MERCHANTABILITY AND FITNESS FOR A PARTICULAR PURPOSE WHICH EXCEED THE ABOVE STATED OBLIGATIONS ARE DISCLAIMED BY WEBASTO PRODUCT NORTH AMERICA INC. AND EXCLUDED FROM THIS AGREEMENT.



Feel the drive

W A R R A N T Y C A R D

Date of Installation:

Name of Owner:

Type of Sunroof:

Hollandia 700

Street Address:

Sunroof Size:

Postal Code / Town:

SCU Serial Number:

State / Country:

Sunroof Unit Serial Number:

Stamp of Approved Dealer:

Invoice Number:



In multilingual versions the English language is binding.

Webasto Product International NL

Constructieweg 47
NL - 8263 BC Kampen
The Netherlands

Phone: +31 (0) 38 337 11 37
Fax: +31 (0) 38 332 51 81
E-mail: info-nl@webasto.com
Internet: www.webasto.com

Webasto Product North America, Inc.

15083 North Road, Fenton, MI
48430, USA

Phone: 810-593-6000
Fax: 810-593-6001
E-mail: info@webasto-us.com
Internet: www.webasto.us

Recommended Sunroof Maintenance

The following tips are suggested for sunroof maintenance:

Glass Panel:

The tinted glass panel is heat and UV resistant. To clean the glass panel use of a mild non scratching detergent and moist chamois is recommended. In case of moisture being present on your sunroof, it is best to wait until this moisture has dissipated to open and enjoy your roof.

Seal:

The glass panel fits against a highly resilient wear resistant rubber seal which enables it to be watertight. In order to keep this seal free from dust, dirt and debris, clean with a moist chamois. The application of talcum powder also extends the life of this seal.

Water Management System:

In order to maintain the functionality of the water management system it is necessary to keep it free of dirt and debris. Webasto recommends to clear the drain tubes of anything that may inhibit full drainage capacity a minimum of once per year.

Mechanisms:

The moving parts of the sunroof are low-maintenance materials. After prolonged use, it may be necessary to clean these moving parts, and lubricate them with silicone based grease such as [Sil-Glyde](#).