

NGW 300 CONTROL UNIT UPDATE

Instruction to Replace Control Unit in Webasto Heater NGW 300 Application

01/13/2004



Old control unit - Fig. 1

This instruction is only valid for buses equipped with Webasto auxiliary heaters NGW300 built before January 2003.

Location of Auxiliary Heater NGW 300 Bus Specific:

- Orion V – Heater compartment between the axles on the driver side.
- Orion VI – Engine compartment, above the transmission on driver side.
- Neoplan – Curb side, engine compartment in the s/s enclosure box.
- New Flyer – Engine compartment above the transmission, access from inside the bus through rear seat access door.

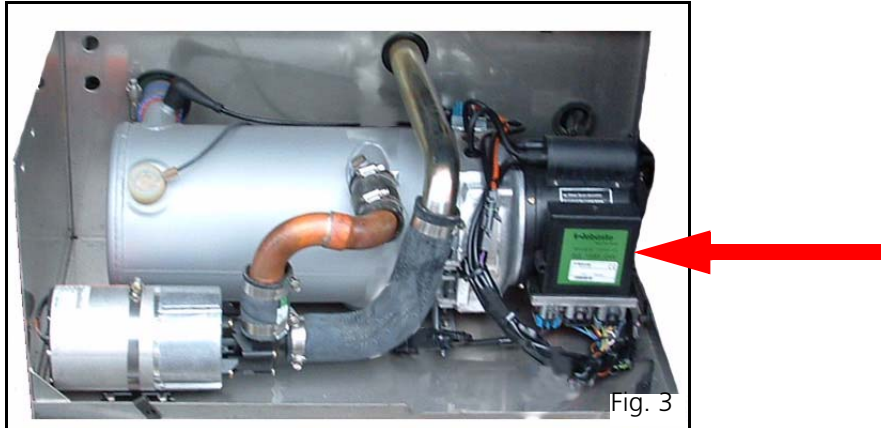
Installation Procedure:

- Disconnect electric power supply to heater.
- Disconnect and remove old control unit and bracket from heater.
- Attach provided adapter harness to the new control unit.



New control unit and adapter harness - Fig. 2

- Attach the new control unit to heater as shown in fig. 3. The bracket is molded into the control units case and does not require additional modifications. Mount the control unit by sliding unit into place. A click will be heard when the unit is properly seated.



- Connect provided adapter harness to the heater.
- Secure harness with nylon wire ties as needed.
- Start the heater and run for 3-5 minutes to verify proper operation.

Fill out supplied Product Upgrade Completion Sheet and return to Webasto Product North America, Inc.

Attention: Chris Kulaga
Webasto Product North America
15083 North Road
Fenton, Michigan, 48430

or
Fax to: 810-593-6129

DISCARD OLD CONTROL UNIT. DO NOT RE-USE!

If you have any questions regarding this document, please call 810-593-6128.