

1. General Information

The mounting kit (P/N 906324) instructions outlined in this document are particular to all Kenworth and the Western Star trucks utilizing composite wood fiber and plastic core floor technology construction and are to be used in conjunction with the general installation instructions included with the following Webasto Heater Kits:

- Air Top 2000 Sleeper Heater Kit - P/N 920520
- Air Top 3500 Arctic Heater Kit - P/N 920544
- Tandem Heater Kit - P/N 923058

Before beginning your installation, please read over and familiarize yourself with all of the installation information provided within this document and the installation manual provided with the appropriate kit listed above.

▲WARNING

Due to the composite floor material used in the construction of the Kenworth and Western Star trucks, it is vitally important that the mounting kit instructions within this document be adhered to.

Failure to do so may result in future damage and weakening of the floor around the area of the heater. Should the sealing around the base of the heater be damaged or compromised as a result, hazardous fumes may enter the sleeper area.

▲CAUTION

Ignoring the installation instructions and its procedures within this document will void the warranty granted by Webasto.

2. Installation

- After selecting the heater location, use the template (P/N 907902) provided with the heater kit to locate all holes required for mounting the heater to the floor. Observe required clearances around heater and surrounding structures. See figure 1.

⚠ CAUTION

Ensure there are no hidden structures under the floor area where you intend to install the heater. There must be sufficient clearance from vehicle cross-members, lines and wiring to allow the combustion air intake tube, exhaust tube and fuel line free access under the floor.

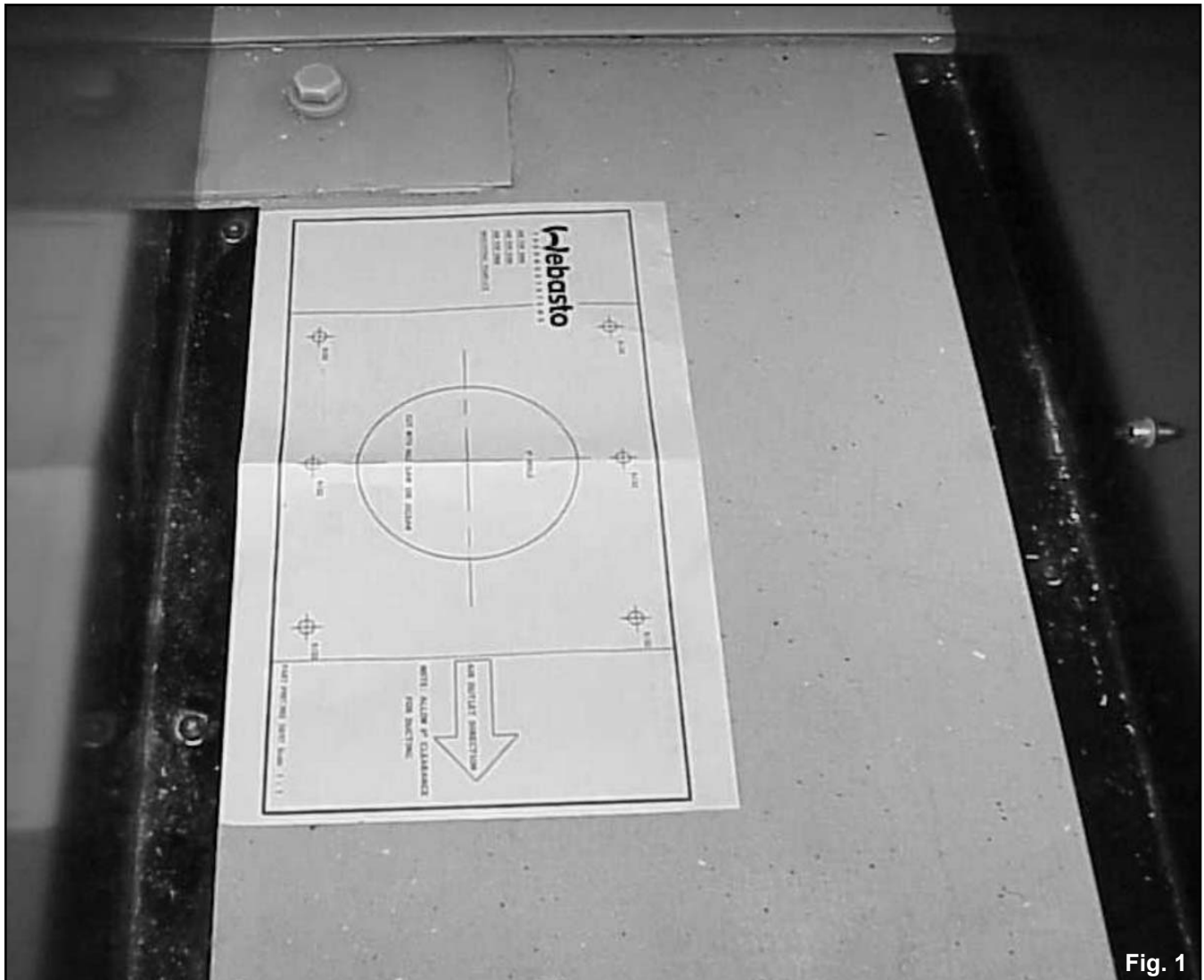


Fig. 1

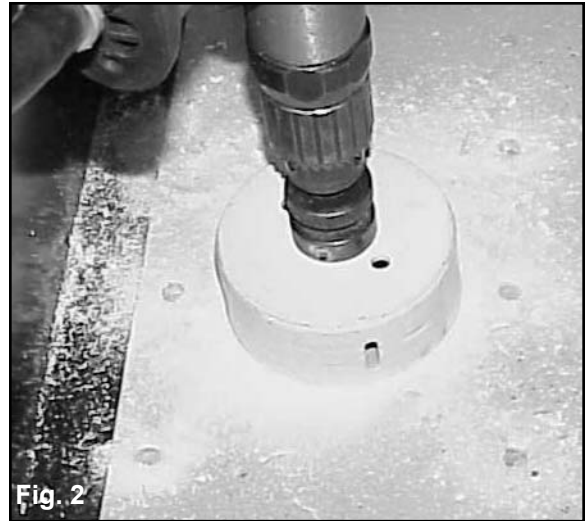
Installation Instructions

Heater Mounting Kit - Kenworth and Western Star Trucks

Webasto

Feel the drive

- Using a 4" hole saw, carefully cut a 4" hole through the floor where indicated by the template. See figure 2.
- Using the template, drill six 1/4" pilot holes where indicated. Drill holes deep enough to penetrate through the top skin of the fiberglass. These six pilot holes will be used to screw in the metal anchors for securing the heater mounting plate to the floor. See figure 2.
- The 4" metal collar (P/N 252409) must be set with epoxy into the 4" round opening in the floor. For best results, before installing, roughen the outer surface of the collar using sandpaper, steel wool or a file to provide a good surface for adhesion. Surfaces to be joined must be cleaned of any dust or oils for good adhesion. Dispense a liberal amount of a multi-purpose two part epoxy adhesive* (temperature range of 0 to 250 °F) on the outer surface of the collar and the inner surface of the 4" opening in the floor. Coat surfaces fully and evenly. Insert collar into the floor hole. See figures 3 and 4.

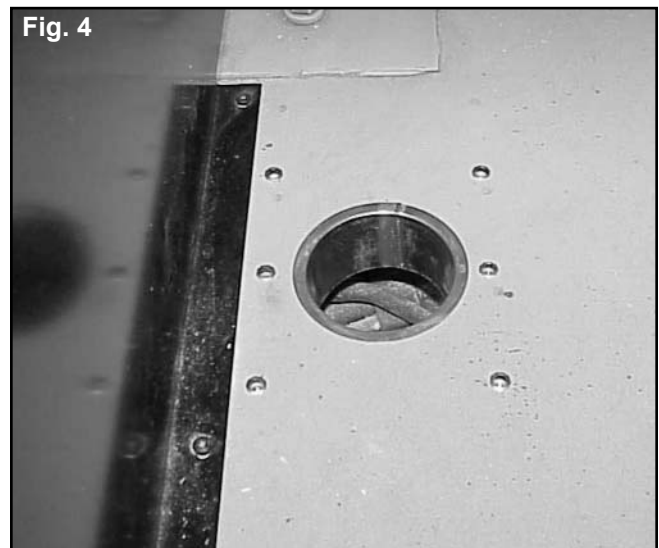


⚠WARNING

Failure to epoxy the metal collar into the composite floor as directed may result in future damage and weakening of the floor structure.

- Using a drill, install metal anchors (P/N 901364) into each of the six mounting holes in the floor.

*Epoxy adhesive not included in kit.



For questions concerning these installation instructions or products detailed on this sheet, call: 1-800-555-4518 USA
1-800-667-8900 Canada

Installation Instructions

Heater Mounting Kit - Kenworth and Western Star Trucks

Webasto

Feel the drive

- While waiting for the epoxy to set, now is a good time to prepare the heater for installation.
- Install and clamp the fuel line to the fuel inlet pipe.
- Install and clamp the exhaust tube and the combustion air inlet tube to the appropriate outlet and inlet on the heater. See figure 5.
- Insert one spacer (P/N 901424) in each of the six mounting holes in the foam gasket of the mounting plate (see arrows in figure 5).
Note: Spacers are required to provide proper spacing and gasket "crush" between the heater mounting plate and vehicle floor.

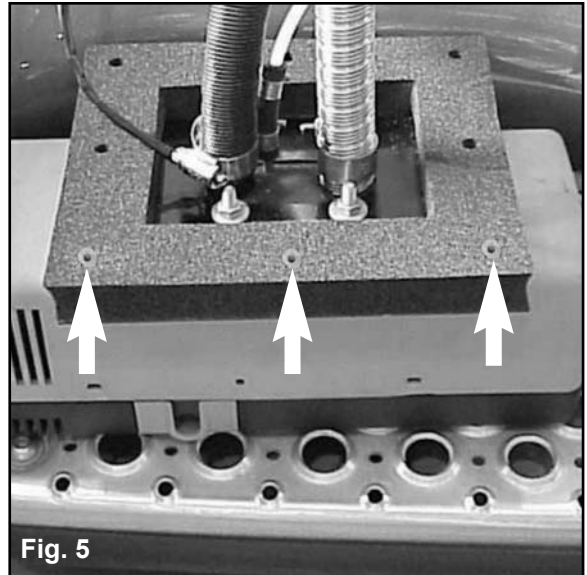


Fig. 5

- Position heater near floor hole and feed fuel line, combustion air intake, exhaust tube and fuel pump cable down through hole. See figure 6.
- Center heater over 4" hole. Secure into place using bolts (P/N 901382) and lock washers (P/N 905282) provided. Tighten down bolts evenly alternating from side to side until mounting plate rests firmly on spacers inserted in foam gasket. Torque tighten bolts to 12 foot pounds. See figure 7.

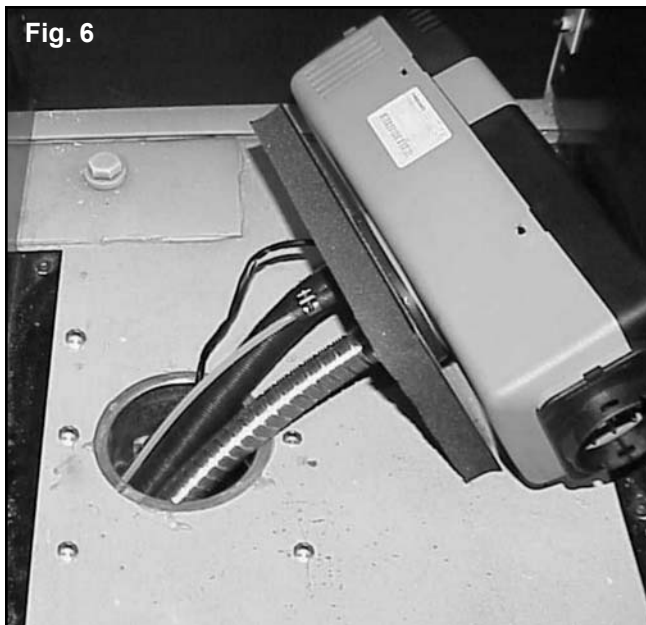


Fig. 6



Fig. 7

- Continue the rest of the heater installation according to the installation manual provided with the heater kit.

For questions concerning these installation instructions or products detailed on this sheet, call: 1-800-555-4518 USA
1-800-667-8900 Canada