

Parking Cooler

BlueCool Truck

With Tundra Inverter

Shore Power Troubleshooting

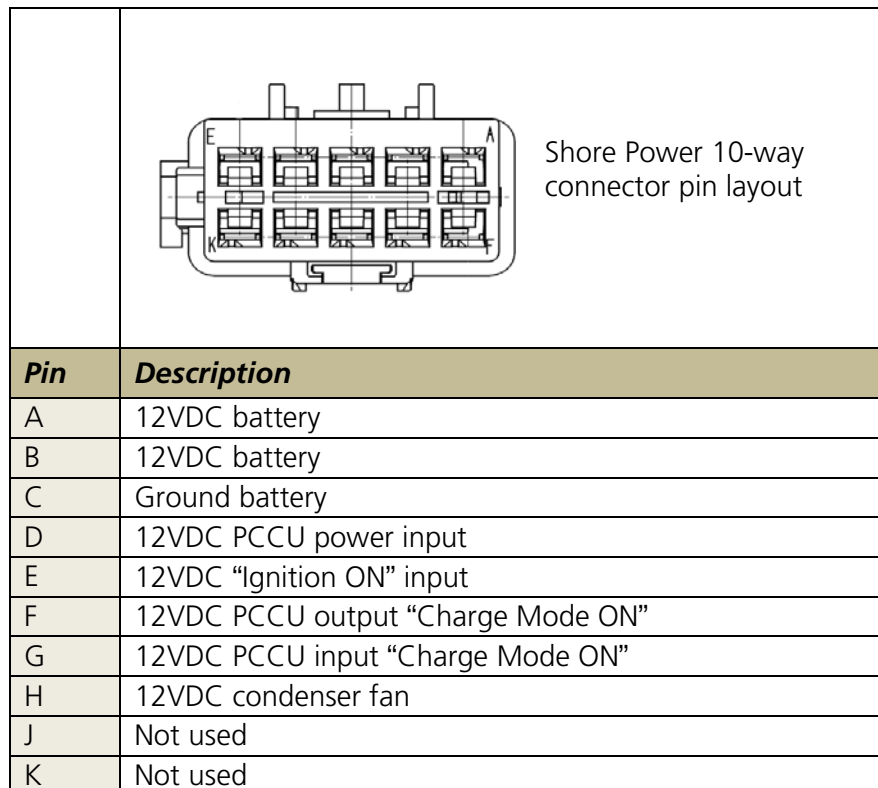
Troubleshooting

In the event of a BlueCool Truck system malfunction (equipped with Shore Power) check / verify the following points before continuing to troubleshooting trees:

- Visually check wiring connections at the batteries, inverter, charger, Shore Power box, the PCCU (Parking Cooler Control Unit) and charge unit.
- Check for blown fuses, (4 fuses located on the Shore Power box, 30A main system fuse at the batteries, and 250A inverter fuse at the batteries)
- Check if the circuit breaker (CB) is in the "ON" position.
- Check if the inverter switch is in "ON" (I) position.
- Check Storage Core internal temperature. If temperature is lower than 30°F, the system is already charged and it will not begin another charge cycle until the temperature rises above 30°F.
- Check if ambient temperature is greater than 60°F. If temperature is lower than 55°F +/- 5°F the system will not charge.
- Turn vehicle engine on and verify that green LED on inverter is illuminated, if not refer to Malfunctions during system "Charge Mode" section for the diagnosis.

Note: During all BCT system testing where it asks to check pin continuity at the PCCU 10-way connector; do not disconnect the connector. Doing so will result in the system delay timer to reset and all testing will be delayed 30 minutes until timer has completed its cycle .

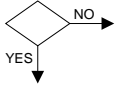
Refer to the diagram below regarding references to the Shore Power 10-way connector throughout the troubleshooting section.



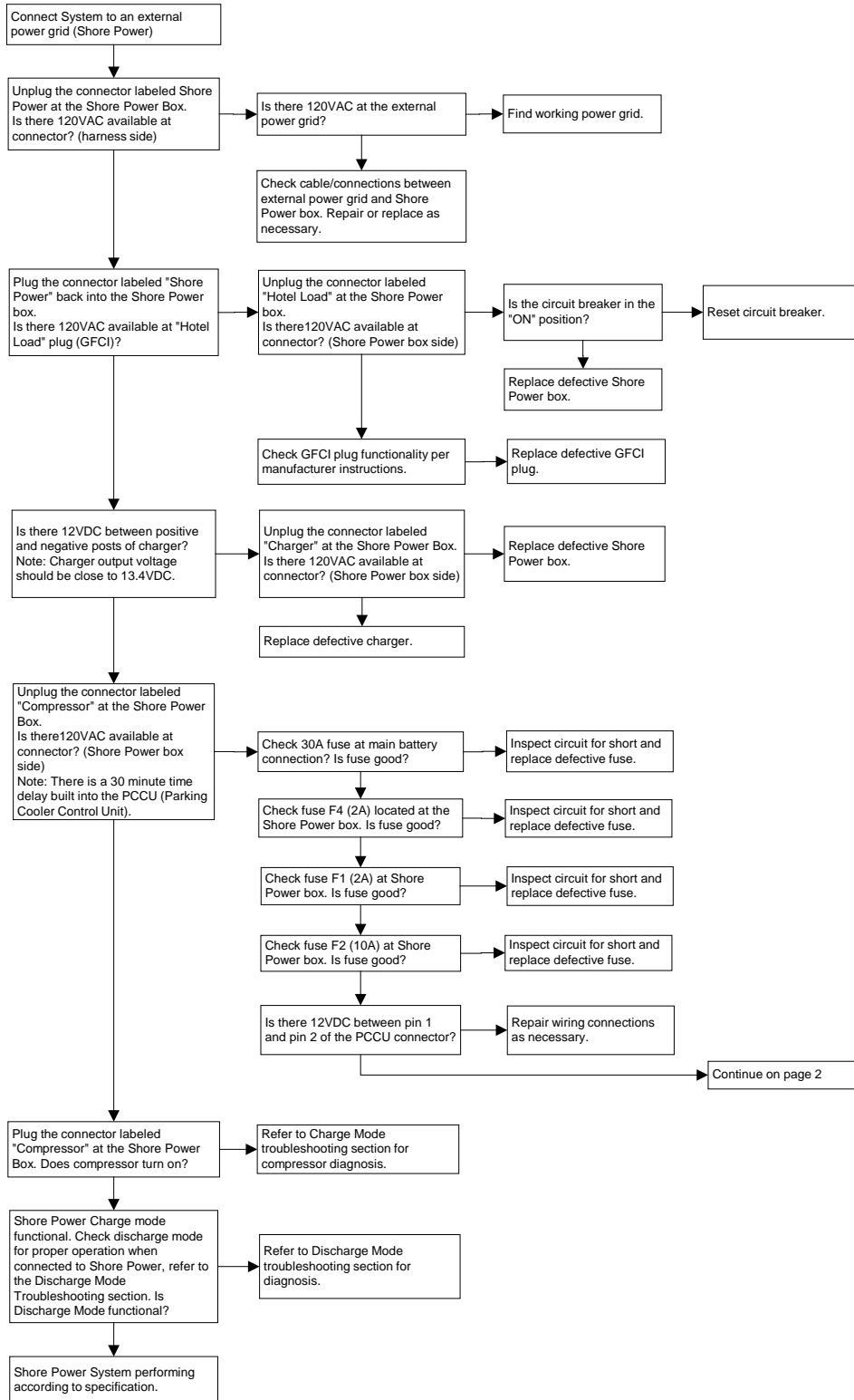
Malfunctions during system “Shore Power”

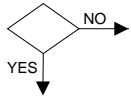
Additional checks before troubleshooting:

- Verify voltage output is approximately 120VAC at the external power grid.
- Make sure there is no additional load(s) connected to the same power grid. This could trip the circuit breaker during the compressor start.
- Disconnect any “Hotel Load” inside the vehicle that might be connected to the interior GFCI plug.

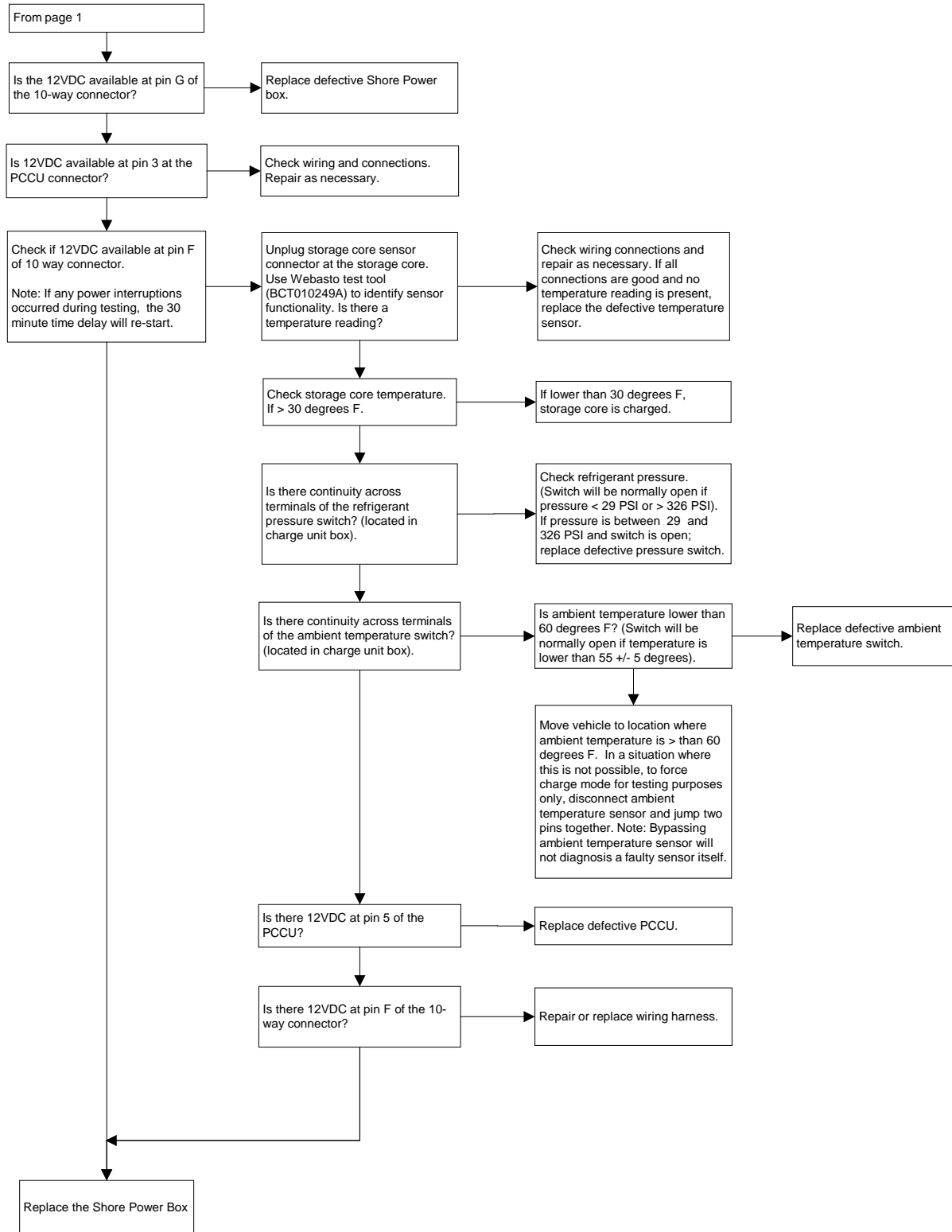


Shore Power Operation (Page 1 of 2)





Shore Power Operation (Page 2 of 2)

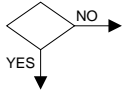


Malfunctions during system “Charge Mode”

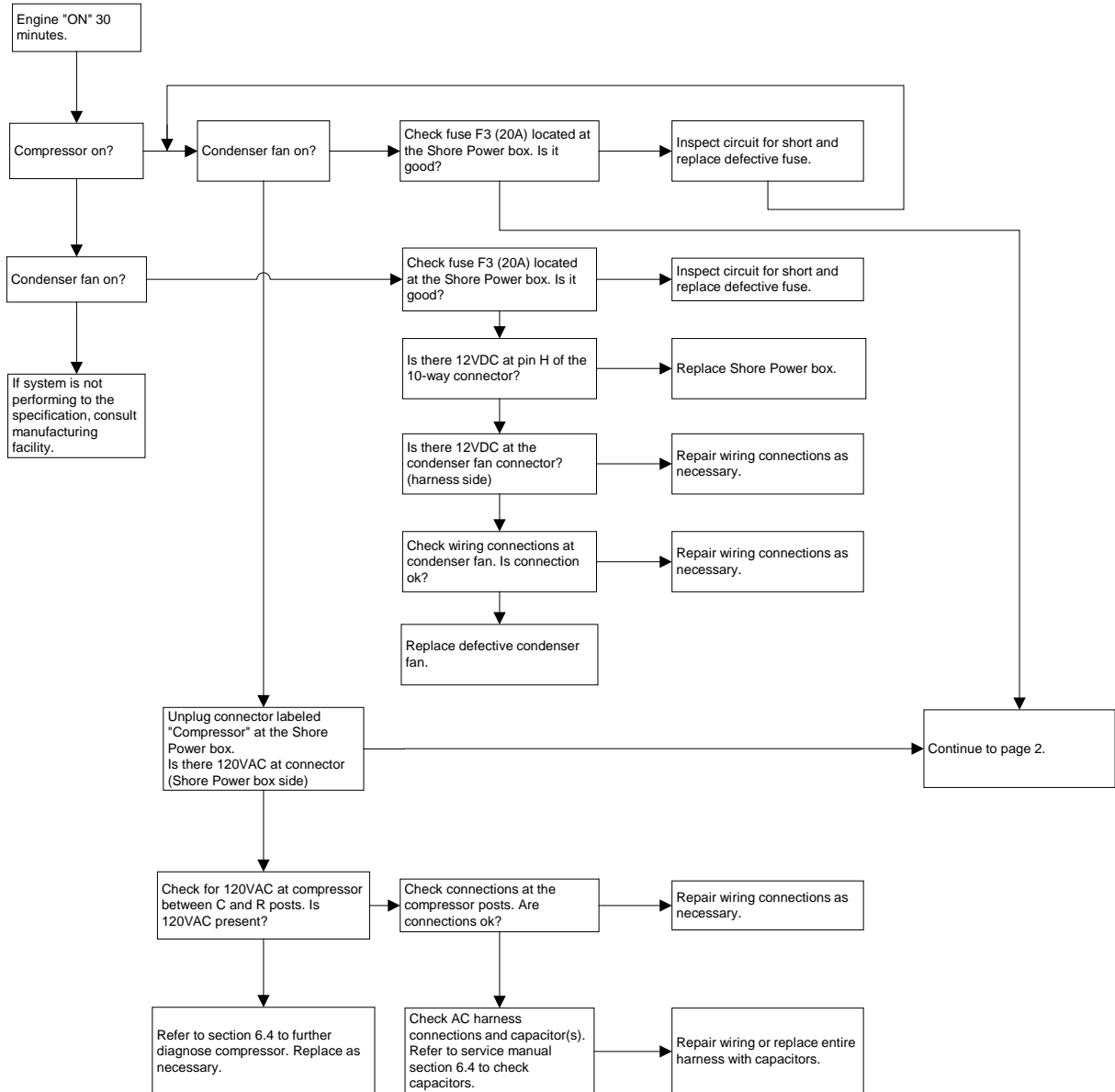
The PCCU has a built in delay time operation feature. The engine must run for 30 minutes or the system must be plugged into an external power grid using only the Webasto supplied 25ft extension cord (P/N: 8510429A) before system will begin charge mode operation.

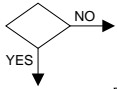
Additional checks before troubleshooting:

- Check continuity across terminals of the ambient temperature switch located at the charge unit. If there is no continuity and ambient temperature is greater than 60°F replace the defective temperature switch.
- Check continuity across terminals of the pressure switch located at the charge unit. The switch will normally open for pressure lower than 29 PSI and greater than 326 PSI. If open and pressure measured is between 29 and 32 PSI, replace the defective pressure switch.

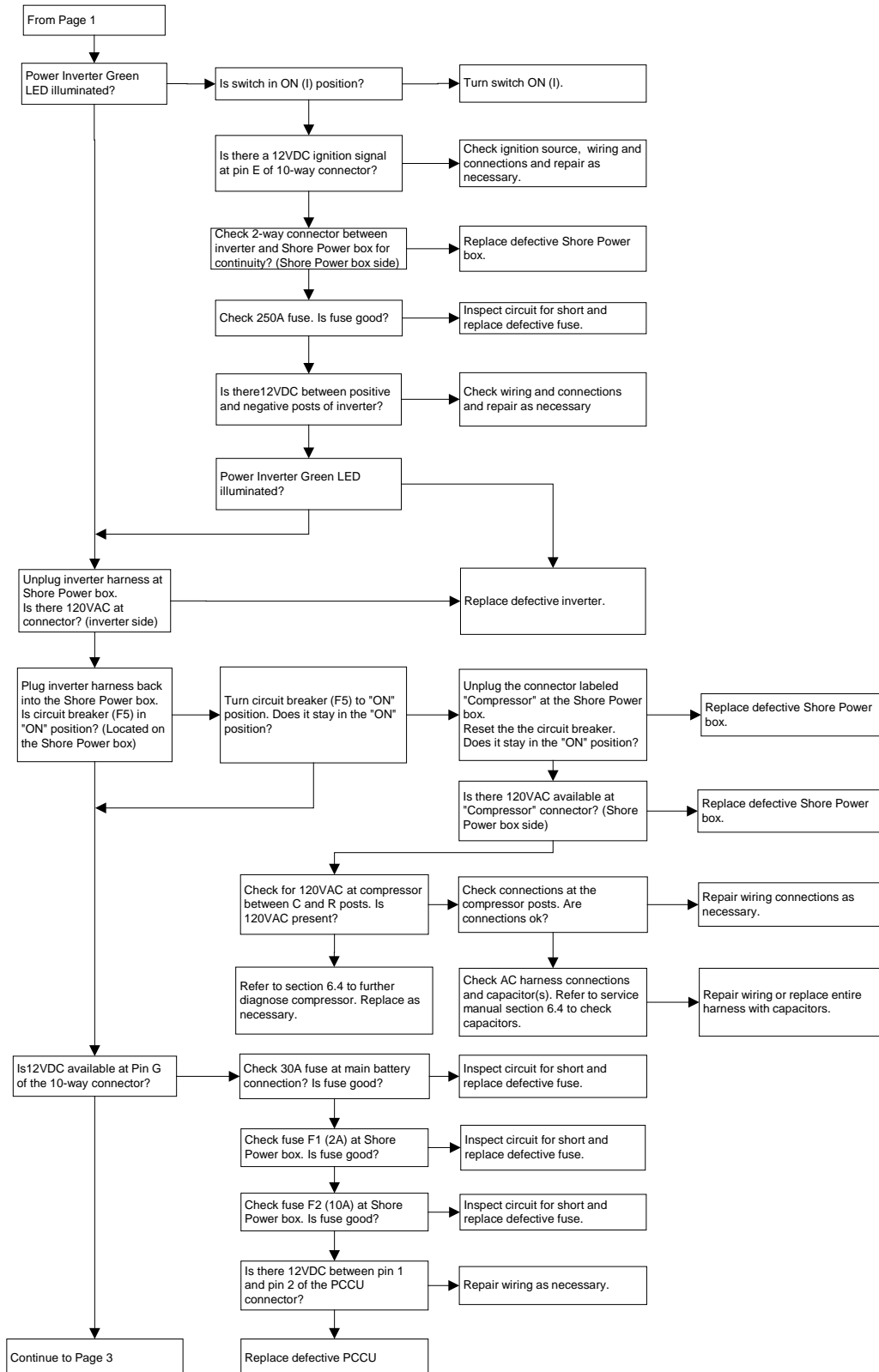


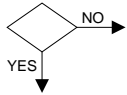
Charge Mode (Page 1 of 3)



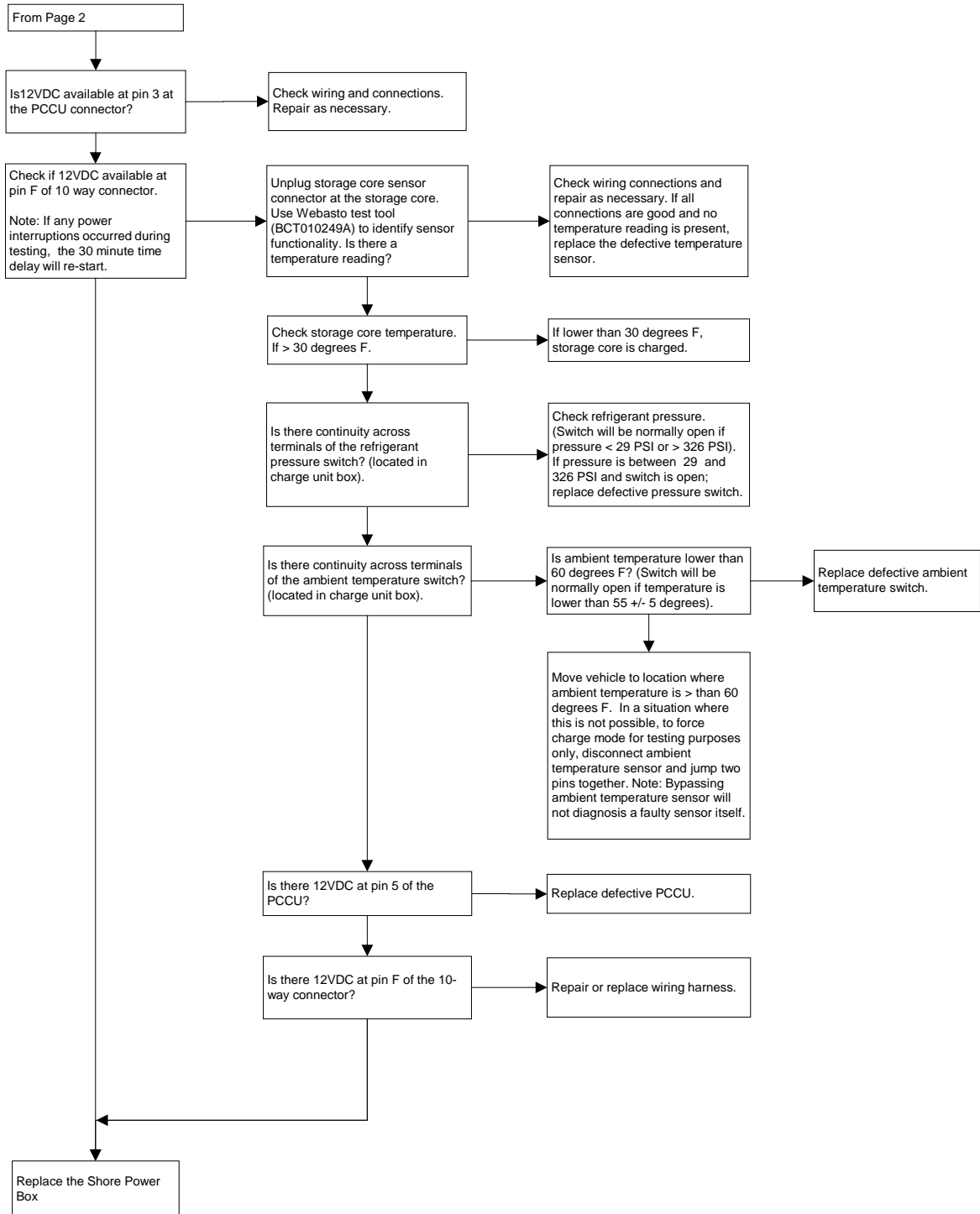


Charge Mode (Page 2 of 3)





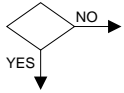
Charge Mode (Page 3 of 3)



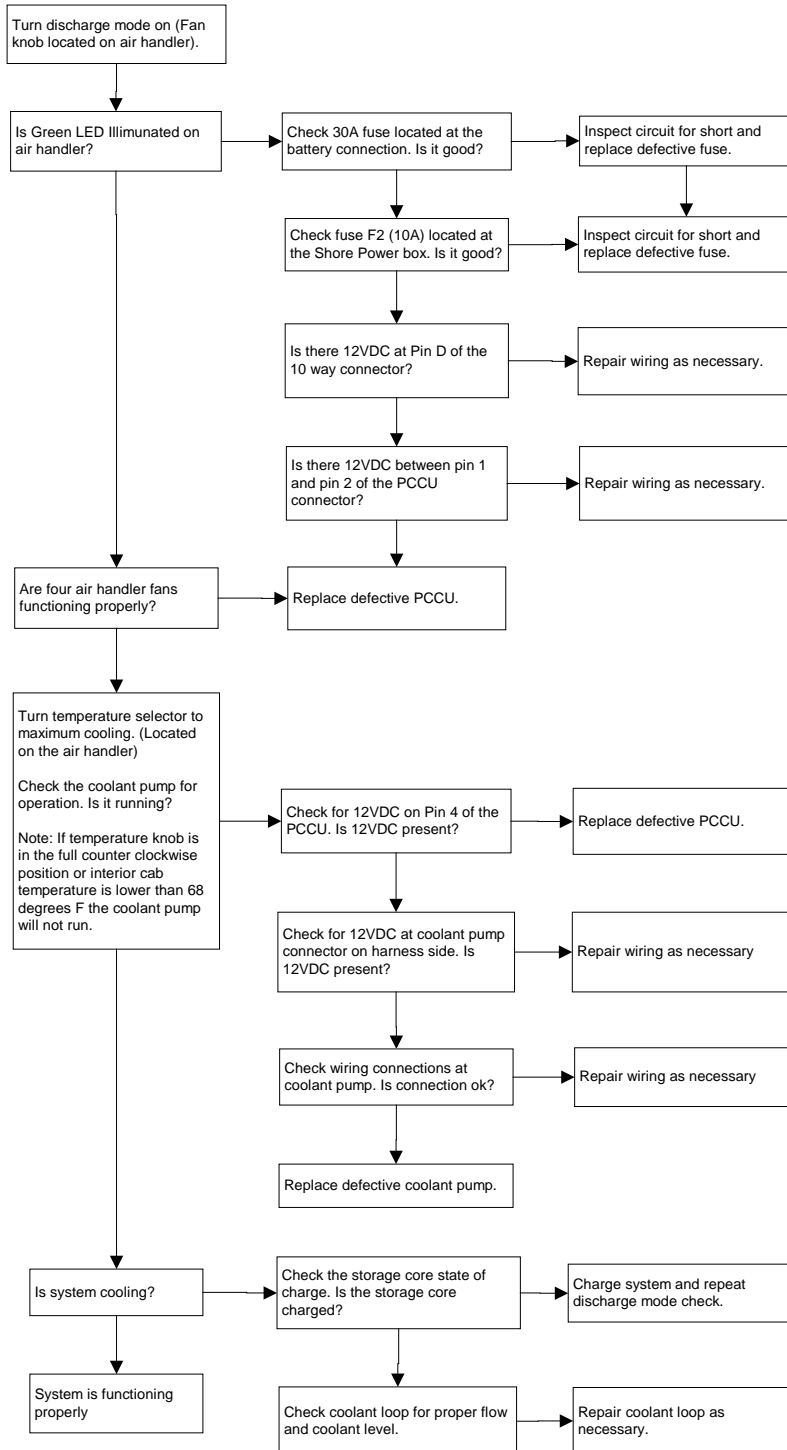
Malfunctions during system “Discharge Mode”

Additional check before troubleshooting:

- Check the vehicles interior temperature. If it is lower than 68°F the coolant pump will not run and chilled air will not be felt coming from the wall mounted air handler.



Discharge Mode



If you have any questions about this bulletin, please contact our technical support team at (800) 860-7866 or via email at info@webasto-us.com.

Troubleshooting



NOTES:



Webasto Product N.A., Inc.

15083 North Road
Fenton, MI 48430

Technical Assistance Hotline
USA: (800) 860-7866
Canada: (800) 667-8900

www.webasto.us
www.techwebasto.com