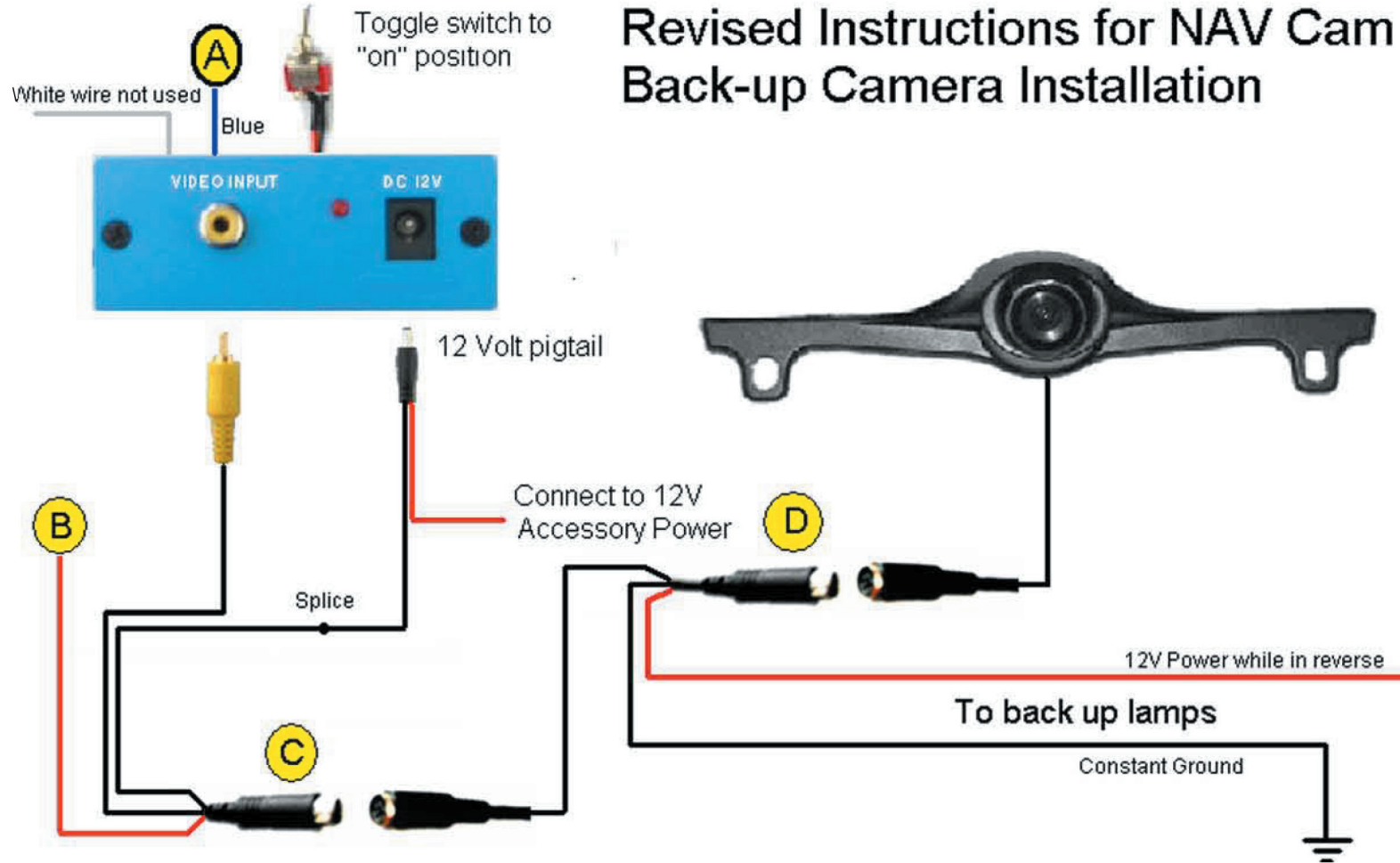


# Revised Instructions for NAV Cam Back-up Camera Installation



1. Connect the blue wire "A" from the controller to the red wire "B" coming from the RCA mini-DIN connector.
2. Connect the black wire from the RCA mini-DIN connector "C" to the black wire on the 12 volt pigtail.
3. Connect the red wire from the 12 volt pigtail to 12 volt accessory power (Ignition "ON").
4. Connect the red wire from the RCA mini-DIN connector "D" to the back-up power circuit.
5. Connect the black wire from the RCA mini-DIN connector "D" to constant ground.