



Feel the drive

E-Z POWER TONNO

Installation Instructions

Full Size Ford & GM Pick Up

6 1/2 Ft. Box

P/N 8W04-TN-0000A-A

E-Z Power Tonno Cover

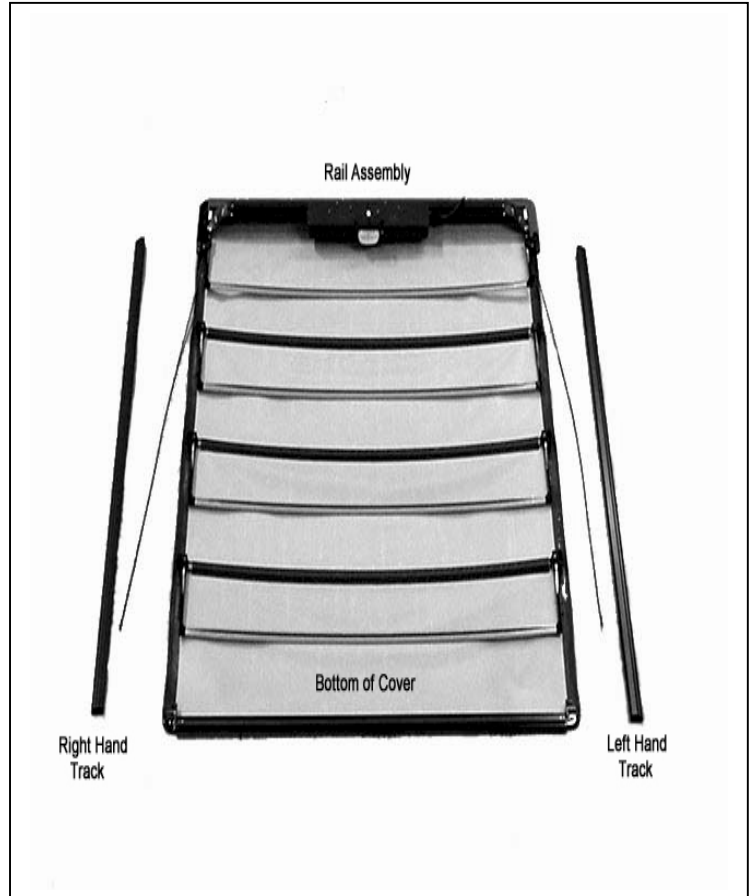
Installation Instructions

1. Required Tools:

- 3/8 Socket set and Ratchet
- Rivet Gun
- 5mm Allen Wrench

Open box and remove all components.
Lay out on a large bench or clean area
on the floor identify the following parts:

- Front Rail & Cover Assembly
- Track RH & LH



Component Box #1 includes

- 1 RH & 1 LH Trolley
- Two (2) End Caps
- Two (2) Bushings
- 1 RH & 1 LH End Caps
- Twelve (12) Rivets
- Two (2) Key FOBS
- Clamp Covers



Component Box #2 includes

- Six (6) Clamps

**If any parts are missing please call
1-800-337-6731 for assistance.**



2. Remove packaging from Front Rail and Cover Assembly. Position bottom side up, with cables extended to max extended position. Unroll the cover to the full unrolled position.

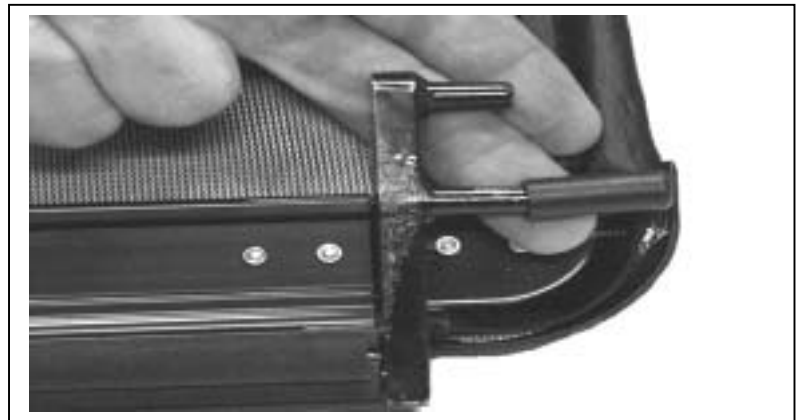
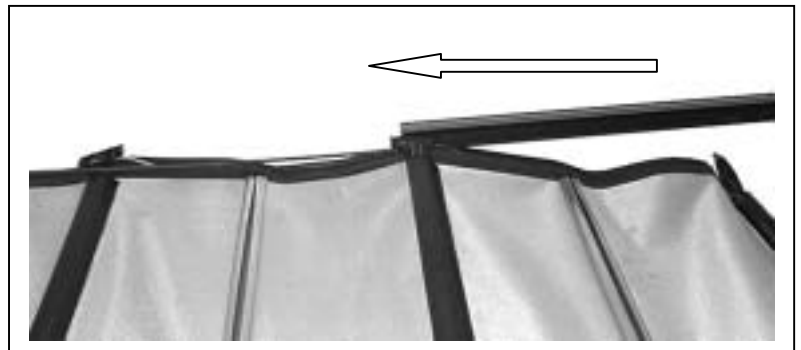


3. With the cover assembly and front rail laying top side down, attach the trolley onto the cable. Insert the trolleys into the track end with the part number facing the front rail. The rear reinforcement and trolleys should now be in the rails. The cables will run into a guide channel in the rail.



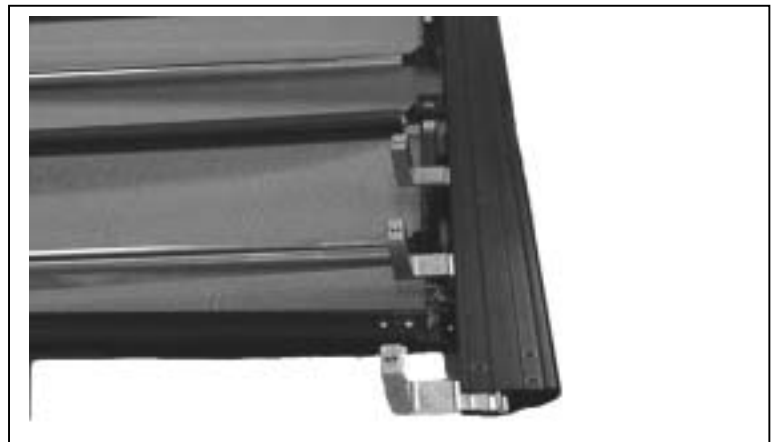
4. With the cover unrolled, the tracks can be slid over the lifter assemblies one side at a time.

- The rear reinforcement will ride on the trolleys.
- Short pins on the rear reinforcement should be inserted into the trolleys.
- The plastic bushings should be installed onto the long pins on the rear reinforcement.



5. Insert upper clamp arms into the track assemblies before proceeding to the next step.

- Three Clamp arms per side.



6. Attach both tracks to the front rail by sliding them on to the molded inserts on the front rail. The track part numbers go towards the front rail.

- Align the machined fastener holes in the track to the holes in the front rail.
- Insert the rivets and fasten them with a pneumatic or manual rivet gun.



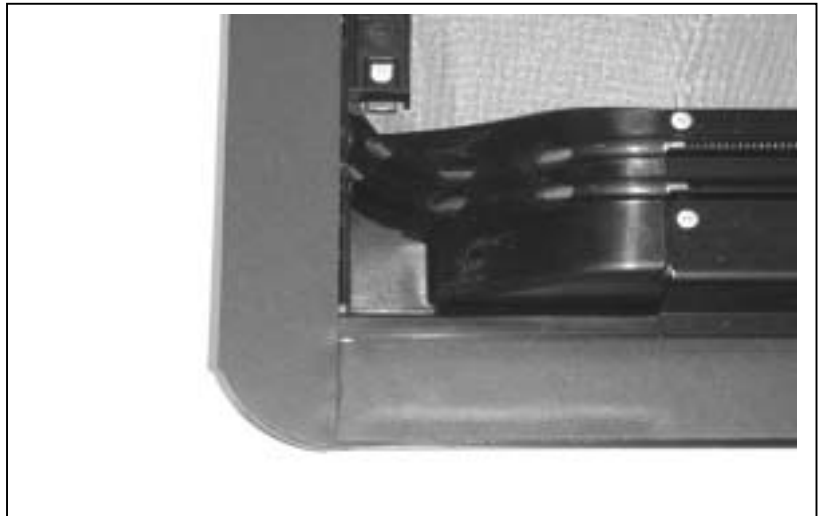
7. Insert the left hand and right hand end caps into the rails.

- Insert the rivets and fasten them with a pneumatic or manual rivet gun.

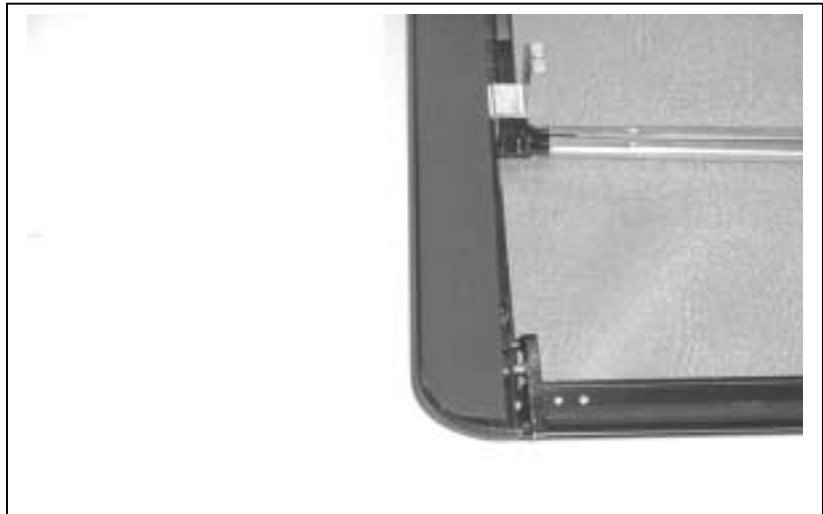


8. Measure and cut the foam tape to length for the front rail and tracks. Peel the backing off and apply the foam to the tracks and rail.

- Front Corner Track and Rail

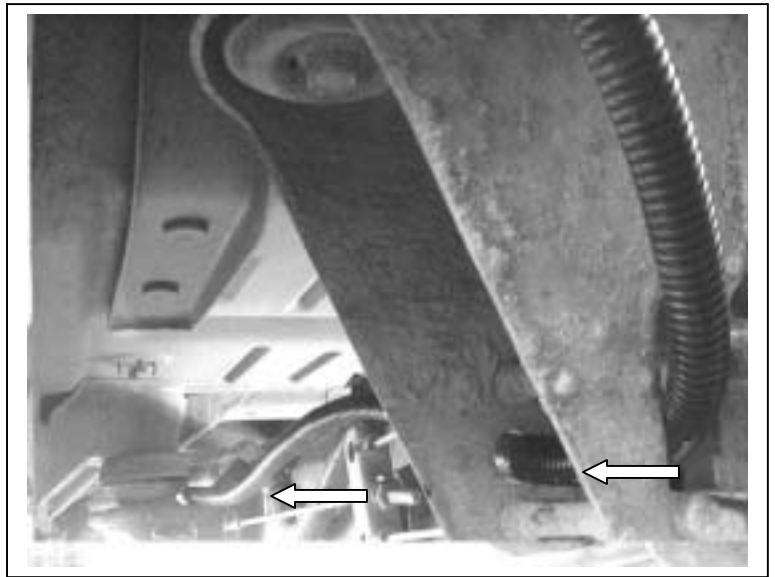


- Rear of Track

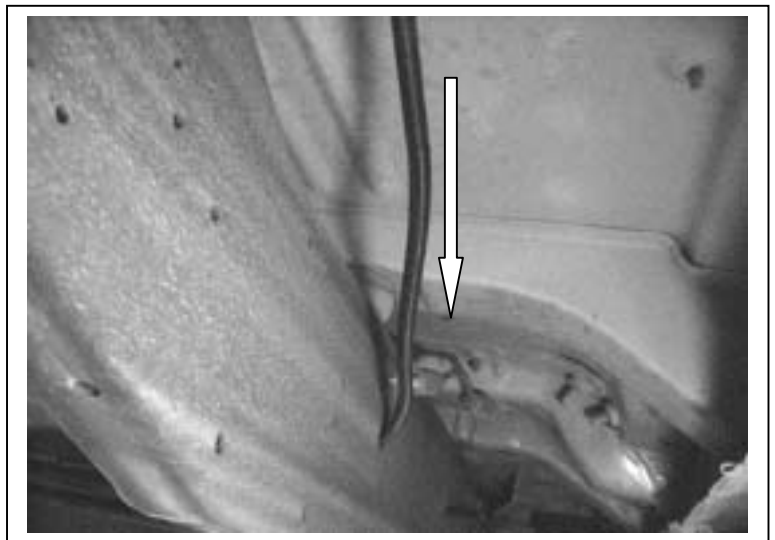


9. Begin installing the under hood wiring. Raise the hood and disconnect the battery cables from the battery starting with the negative cable then positive. Install the front portion of the wire harness from the front of the truck bed to the under hood area by running the harness through the frame rail taking care to avoid sharp edges, moving parts and exhaust components.

- Harness Routing on a 99 through Current GM Pickup.

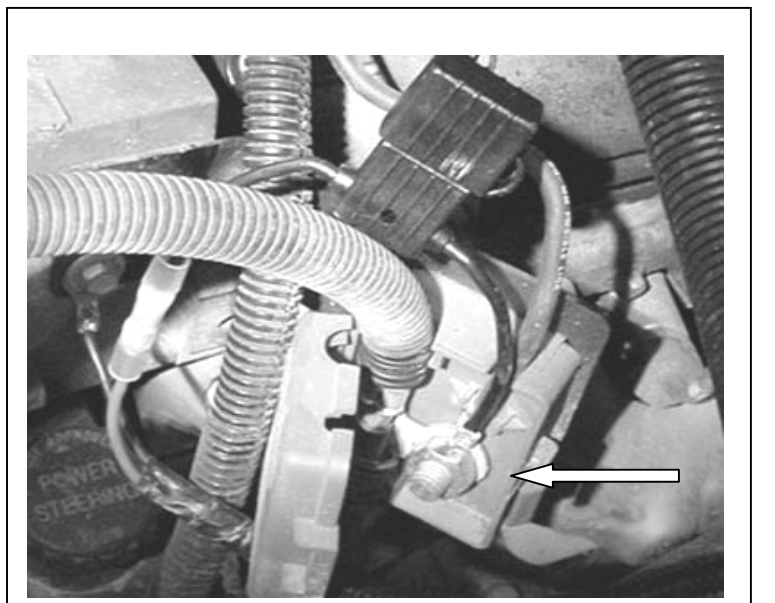


- Harness Routing on a 96 through current Ford Pickup.

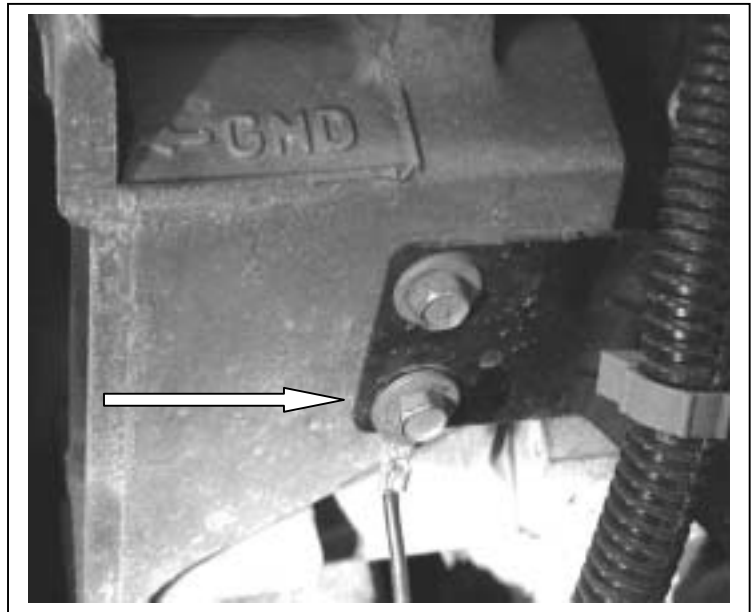


10. The wire harness is supplied at one common length. It may be necessary to cut the harness to length when connecting the harness to the supplied fuse holder.

11. Installation of the fuse holder is specific to the GM and Ford Pickups. On the GM 99 through current Pickup, there is a battery junction which can be used.



- Remove the bolt with the positive cable attached. Install the eyelet with the fuse attachment and reinstall the bolt through both the eyelet and positive cable eyelet and fasten the bolt using caution not to over tighten the bolt.
- To install the ground eyelet remove the bolt on the generator bracket marked GROUND. Crimp the single eyelet to the black wire in the two wire harness. Insert the bolt through the eyelet hole and reinstall the bolt. **Do not to over tighten the bolt.**



12. Installing the eyelet on the Ford 96 through current pickups involves removing the nut on the battery cable connector for both positive and negative cables.

- Remove the tightening nut on the positive cable connector to the battery. Install the eyelet with fuse holder to the positive battery cable connector tightening bolt. Reinstall the nut on the bolt but do not tighten until reconnecting the battery cables.
- For the negative cable, crimp the eyelet onto the black wire in the two wire harness. Install the eyelet onto the negative cable bolt. Do not tighten until reconnecting the cables.



13. Reinstall the battery cable connections starting with the positive cable first. Install the negative battery cable last.

Caution: Never over tighten battery cable connections.



14. Once the harness has been run through the frame and up the engine bay to the fuse holder and ground, it may be necessary to cut the harness to the correct length.

- Separate the power and ground wire in the harness from the conduit. Pull the wires to the fuse holder wire and ground wire and cut the harness wires to length.
- Be sure the end of the wires are exposed at least $\frac{1}{4}$ inch. Use the insulated butt splice connectors provided and crimp them on the short side first.
- Insert the harness wires into the splice connectors and crimp them into the connectors.
- Melt the insulating cover using a heat source.
(A cigarette lighter will work.)
- Reinstall the positive battery cable then the negative battery cable.
- Check to ensure the harness is not touching any sharp edges, moving parts or exhaust components.
- Lower the hood of the truck.



15. Using a helper, lift the E-Z Power Tonno cover and turn it upright. Carefully set the E-Z Power Tonno cover on the bed of the truck.

- Put the tailgate down.
- Be sure to install the E-Z Power Tonno cover from rear to front to avoid scratching the truck bed.
- Check side to side and front to rear position and adjust the tracks and rail to

the desired position.

- Begin installing lower clamp jaws to upper clamp arms using the machine screws. Position the clamps before tightening fully.
16. It will be necessary to initialize the E-Z Power Tonno in order for it to operate correctly.
- Connect the electrical connector on the wire harness.
 - The cover should be almost completely closed.
 - Press the close and open buttons on the Key FOB as follows:
Close/Open
Close/Open
Close/Open
 - The E-Z Power Tonno cover will finish Closing then it will open and then close Completely. This will signify the cover is initialized.
17. Cycle the E-Z Power Tonno fully one time and then fully tighten the clamps.
18. Operate the E-Z Power Tonno cover to ensure proper operation.

